



Stakeholders from multiple government agencies and corporations share ideas on how earthquake scenarios can help inform strategies for improving building resilience to earthquake damage in Thimphu, Bhutan. This workshop was held as part of an ongoing multi-year project in partnership with Bhutan's Department of Disaster Management and Verisk Analytics.

Note from the President

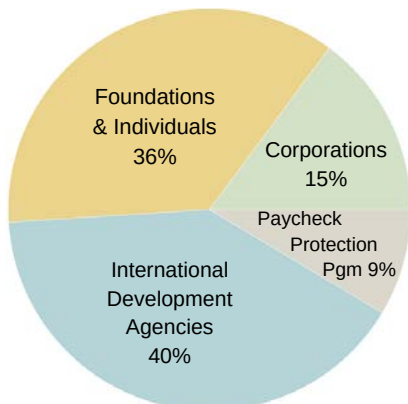


GeoHazards International (GHI) works to save lives by empowering at-risk communities worldwide to stay safe from disasters. For decades, we have addressed earthquake, landslide, and tsunami risk. Recently, we have started working on climate-related hazards as well, due to the dire need in the communities where we work. This has also taken us to new geographical areas, where we are applying our approach of working alongside communities.

This year, we are recognizing our global project partners and the important role they play in advancing our mission. This multi-disciplinary community includes technical experts and leaders at the local, national, and international level — each bringing unique knowledge and experience. Through this rich exchange and human connection, we are able to make progress and ensure more lasting impact. Our staff is the critical link that brings these people from all walks of life together.

Our world is facing increasingly devastating disasters. We must strive to stay ahead. Your support helps us cultivate long-term relationships with our global community of partners. Together, we continue our work towards making our world a safer place, especially for those most at-risk.

- Veronica Cedillos



2021 Revenue, \$1.42M

OUR COMMUNITY OF PROJECT PARTNERS

bring long-term risk reduction through exchange and sharing

DISCIPLINES

- Architecture

Civil Engineering

Design

Climatology

Fire Safety

Structural Engineering

Tsunami Modeling

Urban Planning

Wind Engineering

Disaster Management
- Seismology

Geotechnical Engineering

Climate Adaptation

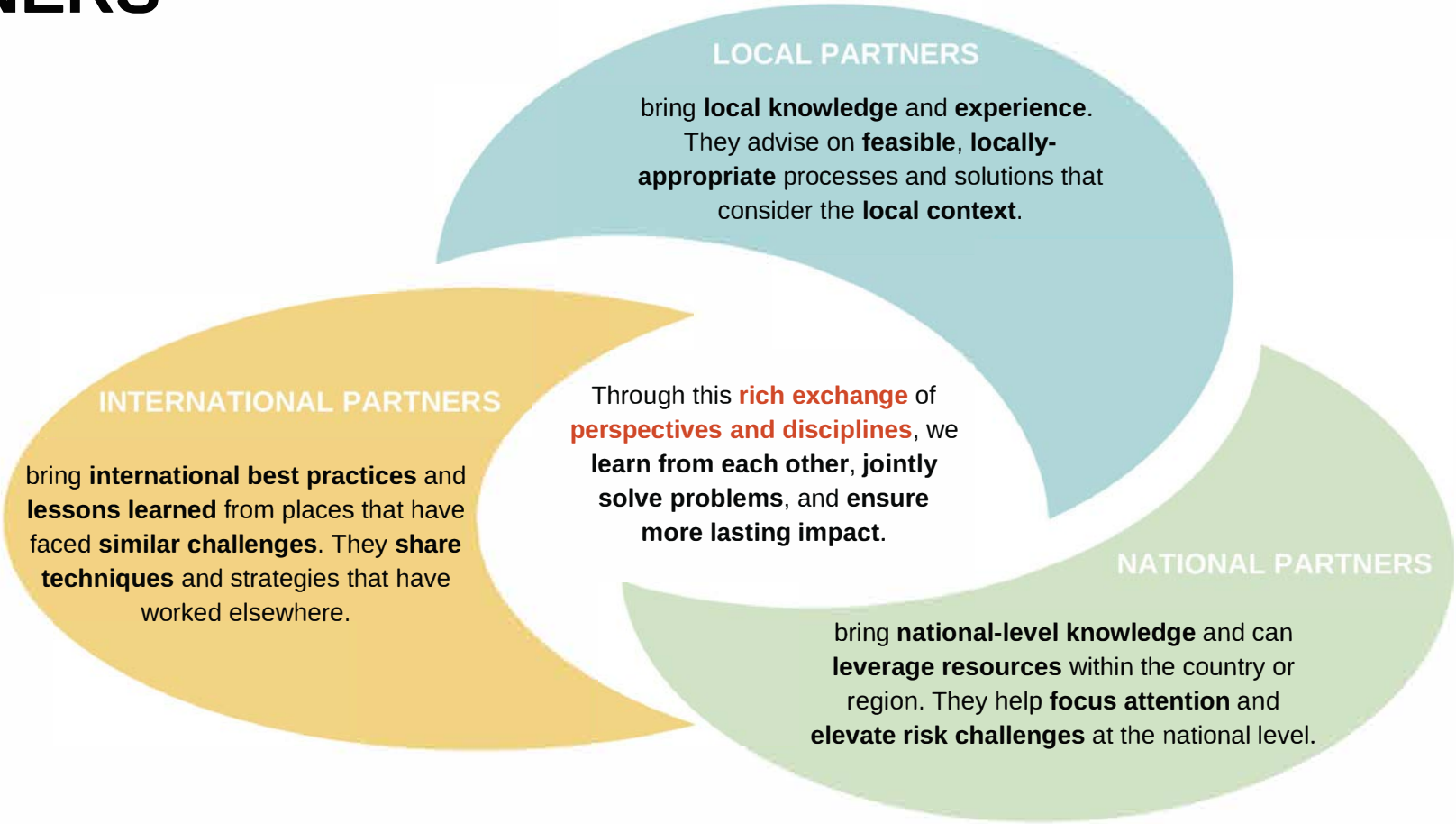
Energy Conservation

Social Science

Policy

Geophysics

Geology



Many people worldwide generously contribute their expertise, ideas, and time – they make our progress possible. This photo collage represents some of these dedicated individuals.



“ It is indeed a positive and fruitful relationship I have with GHI, working alongside multi-disciplinary international resource persons to help us with alternate insights in search for solutions.

Dr. Vasudevan Suresh, India partner

“ GHI builds relationships and maintains communication with a strategic network of stakeholders that can help advance the cause — including scientists, government authorities, and people in the potentially affected communities.

Nick Alexander, Indonesia partner

“ GHI is committed to making a difference in people's lives through promoting institutional and social change. Their efforts are so powerful because they work in a nested manner from the individual all the way to the societal level.

- Dr. Lori Peek, Natural Hazards Center, U.S.

Project Summary

October 2021 - October 2022

	Country	Focus Areas						
		Mentoring & Training	Schools & Youth	Hospitals	Policy & Planning	Assessments & Scenarios	Novel Approaches	Preparedness
Family Disaster Preparedness	Haiti & DR*		x					x
Support for Disaster Resilience Programs in the Caribbean	Haiti & DR*	x	x					x
Timoun an Aksyon (Kids in Action)	Haiti	x	x				x	x
Housing and School Recovery from the 2021 Earthquake	Haiti		x			x		
Post 2021 Earthquake Haiti Resilience Effort	Haiti	x	x	x		x		x
Post Earthquake Community-Sourced Data Collection	Haiti	x	x	x		x		
Supporting Thimphu's Path to Safer Buildings	Bhutan				x	x		x
Disaster Risk Management & Climate Change Adaptation Policy	Bhutan			x	x	x		
Support for Disaster Resilience Programs in South Asia	Bhutan & India	x	x		x	x		
Disaster Resilience of Power Infrastructure in Guwahati	India					x		
Informing a Strategy for Resilient/Equitable Schools in Nagaland	India		x			x		
Local Climate Risk Assessments & Training in Kerala	India	x			x	x	x	
Earthquake Desks Program Support	Nepal		x				x	
Western Nepal School Earthquake Safety Project	Nepal	x	x			x		x
Fire Safety of COVID-Designated Health Facilities	Nepal & Maldives	x		x		x		x
Building Regulatory Capacity Assessment	SL* & Liberia					x		
Rapid Diagnostics of School Infrastructure	BF* & Senegal		x			x		
Climate Change Program Support	Global						x	
Next Generation Scenarios: Studies & Guidance	Global				x	x	x	
Effects on Geological Hazards from Climate Change	Global				x	x	x	x

*DR: Dominican Republic; SL: Sierra Leone; BF: Burkina Faso

Funding Sources:

International Development Agency

Individual/Foundation

Corporation



Our Haiti team meeting with Civil Protection Directors and national experts in preparation for the Haitian-led earthquake and tsunami drill in May 2022 that involved over 4,000 schoolchildren and 200 safety personnel and community leaders.

GeoHazards International
6701 Koll Center Pkwy, Suite 250
Pleasanton, CA 94566

Phone: +1.650.614.9050
Email: info@geohaz.org

Bhutan · Dominican Republic
Haiti · India · Nepal · U.S.A.

www.geohaz.org

GHI MISSION

To save lives by empowering at-risk communities worldwide to build resilience *ahead of* disasters and climate impacts.